



## CIRCLE

The Center for Information & Research on  
Civic Learning & Engagement

### Quick Facts About Young Voters in Wisconsin: The Primary Election Year 2008

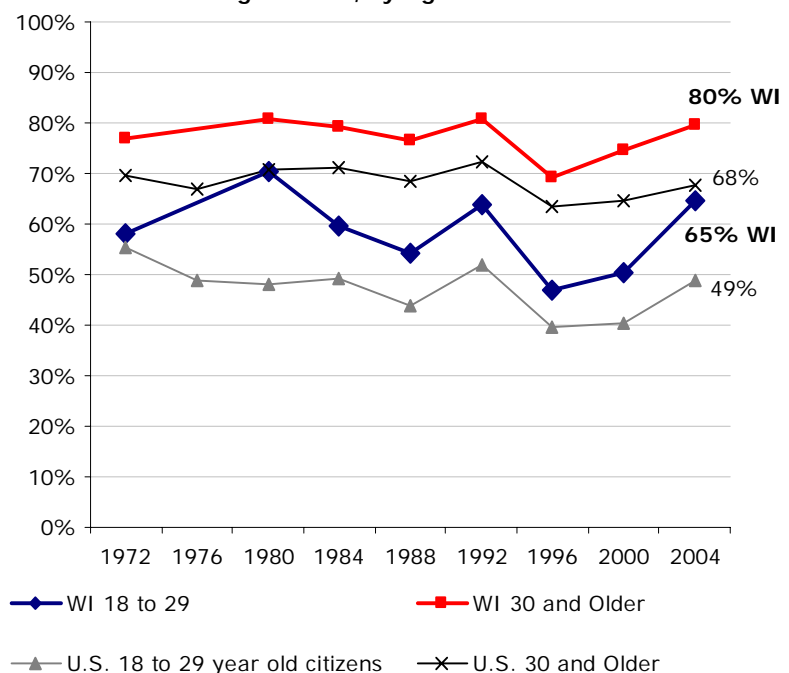
By Karlo Barrios Marcelo<sup>1</sup>  
February 2008

Wisconsin's young voters boasted the second highest voter turnout in 2004 (second only to Minnesota). This fact sheet presents information on young people's voter turnout rates and selected demographics.

**Table 1 – 2008 Wisconsin Citizens' Educational Attainment, by Age**

	Ages 18-29	Ages 30+
Less than High School	20%	8%
High School	31%	38%
Some College	34%	28%
Bachelor or higher	15%	26%

**Figure 1: Wisconsin Voter Turnout in Presidential Years Among Citizens, by Age**



Source: Author's tabulations from the Current Population Survey, November (Voting) Supplements, 1972-2004. No 1976 data for WI.

**Table 2 – 2008 Wisconsin Citizens' Population Estimates, Race/Ethnicity, and Student Status, by Age**

	Total Population	Share of Ages 18+	White non-Hispanic	Other Race/Ethnicity	College Student
<b>Ages 18-29</b>	<b>895,478</b>	<b>22%</b>	<b>84%</b>	<b>16%</b>	<b>22%</b>
Ages 30+	3,244,689	78%	92%	8%	N/A

Source for Tables 1 and 2: Author's tabulations from the Current Population Survey, March (Demographic) Supplement, 2007. To project 2008 population estimates for ages 18-29 and 30+, I allow for a one-year difference (17-28 and 29+) when using 2007 data. 2007 estimates for ages 18-29 and 30+ are available upon request.

#### Notes

<sup>1</sup> Research Associate. I thank Peter Levine and Emily Kirby for comments on previous drafts of this fact sheet. All errors in fact or interpretation are my own.