



CIRCLE

The Center for Information & Research on
Civic Learning & Engagement

Quick Facts About Young Voters in Florida: The Primary Election Year 2008

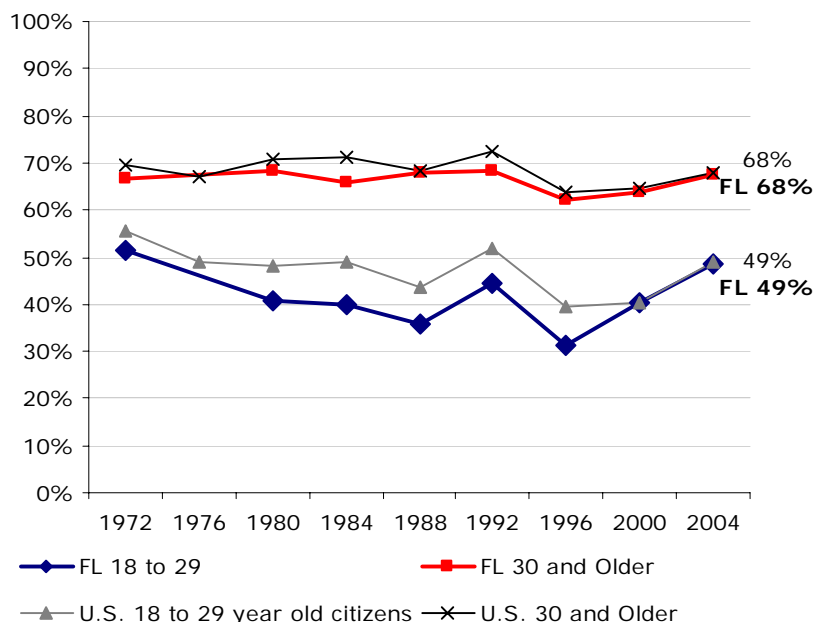
By Karlo Barrios Marcelo¹
January 2008

Florida's young voters will be a key demographic on January 29th. This fact sheet presents information on young people's voter turnout rates and selected demographics.

Table 1 – 2008 Florida Citizens' Educational Attainment, by Age

	Ages 18-29	Ages 30+
Less than High School	25%	10%
High School	34%	34%
Some College	30%	27%
Bachelor or higher	11%	29%

Figure 1: Florida Voter Turnout in Presidential Years Among Citizens, by Age



Source: Author's tabulations from the Current Population Survey, November (Voting) Supplements, 1972-2004.

Table 2 – 2008 Florida Citizens' Population Estimates, Race/Ethnicity, and Student Status, by Age

	Total Population	Share of Ages 18+	White non-Hispanic	Black non-Hispanic	Hispanic/Latino	College Student
Ages 18-29	2,202,000	17%	60%	20%	16%	18%
Ages 30+	10,189,682	83%	73%	12%	13%	N/A

Source for Tables 1 and 2: Author's tabulations from the Current Population Survey, March (Demographic) Supplement, 2007. To project 2008 population estimates for ages 18-29 and 30+, I allow for a one-year difference (17-28 and 29+) when using 2007 data. 2007 estimates for ages 18-29 and 30+ are available upon request.

Notes

¹ Research Associate. I thank Peter Levine and Emily Kirby for comments on previous drafts of this fact sheet. All errors in fact or interpretation are my own.