



## CIRCLE

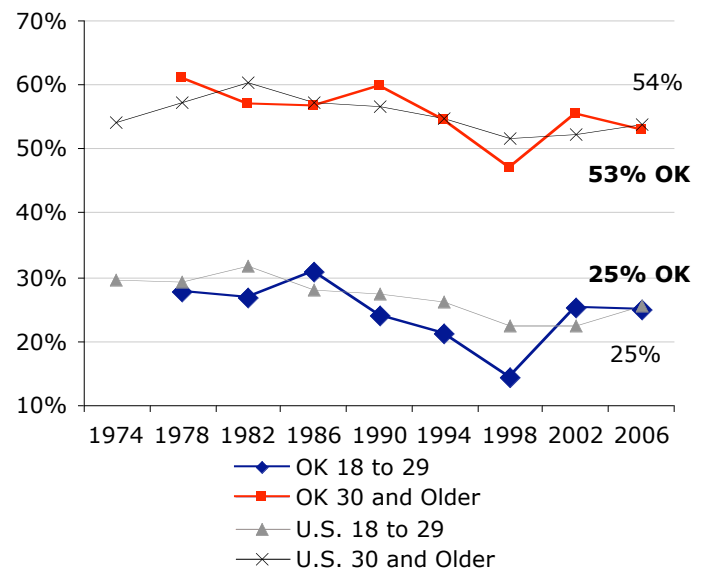
The Center for Information & Research on  
Civic Learning & Engagement

## Quick Facts about Young Voters in Oklahoma: The Midterm Election Year 2006

By Mark Hugo Lopez, Karlo Barrios Marcelo, and Jared Sagoff<sup>1</sup>  
Updated June 2007

The 2006 midterm election was the second major election in a row that saw an increase in the electoral participation of young people ages 18-29. Between 2002 and 2006, the percentage of eligible young people who voted increased by 3 percentage points to 25 percent, the single largest increase among all age groups nationally.<sup>2</sup> However, while youth electoral participation improved between 2002 and 2006 nationally, in Oklahoma, the youth voter turnout rate remained unchanged at 25 percent from 2002 to 2006. Overall, Oklahoma ranked 30<sup>th</sup> (tied with NM and PA) among all states and the District of Columbia in 2006, down from 16<sup>th</sup> in 2002.

**Graph 1: Oklahoma Voter Turnout in Midterm Years Among Citizens, by Age**



Source: Current Population Survey, November Supplements, 1974-2006.

This fact sheet reports the characteristics of young voters for the state of Oklahoma, including estimates of the number of young voters, and voter turnout rates in 2006 and 2002 for various sub-groups of young people.

## Youth Turnout Estimates, 2006

In 2006, a midterm election year, an estimated 557,000 young people in Oklahoma were eligible to vote in U.S. elections. Table 1 shows voting statistics for the years 2006 and 2002.

## Voter Turnout Rates in 2006 and 2002 Among Eligible Young Citizens, Ages 18-29

Table 2 displays voter turnout rates for various groups of young people ages 18 to 29 in 2006 and 2002 in Oklahoma. In 2006, voter turnout among many youth groups in Oklahoma was down from 2002, though overall there has been little change in voter turnout among young Oklahoma voters.

**Table 1 – Oklahoma Voter Turnout Statistics, 2006 and 2002**

	Young People 18 to 29	Adults 30 and Older
<b>2006</b>		
Number of Votes Cast	146 thousand	1.0 million
Voter Turnout Rate	25 percent	53 percent
Share of all Voters	12 percent	88 percent
<b>2002</b>		
Number of Votes Cast	135 thousand	1.1 million
Voter Turnout Rate	25 percent	55 percent
Share of all Voters	11 percent	89 percent

Source: Authors' Tabulations, Current Population Survey, November Supplement 2006 and 2002.

**Table 2 – Oklahoma Voter Turnout Rates Among Young Citizens ages 18 to 29, 2006 and 2002**

Voter Turnout Rate Among:	2006	2002
<b>Gender</b>		
Women	25 percent	26 percent
Men	25 percent	25 percent
<b>Educational Attainment</b>		
Less than High School	12 percent	13 percent
High School	21 percent	24 percent
Some College	21 percent	28 percent
BA or more	***	41 percent
<b>Marital Status</b>		
Single Men	22 percent	27 percent
Single Women	22 percent	22 percent
Married Men	***	26 percent
Married Women	31 percent	32 percent
Registered Voter	46 percent	53 percent
All Youth, Oklahoma	25 percent	25 percent
All Youth, National	25 percent	22 percent

Source: Authors' Tabulations from the 2006 and 2002 November Supplements of the Current Population Survey. '\*\*\*' indicates a sample size is too small to produce a reliable estimate.

## Notes

<sup>1</sup> Research Director, Research Associate, and Research Assistant, respectively. We also thank Peter Levine, Emily Kirby, Abby Kiesa, and Deborah Both for comments on previous drafts of this fact sheet.

<sup>2</sup> See "Youth Voter Turnout Increases in 2006" by Mark Hugo Lopez, Karlo Barrios Marcelo, and Emily Hoban Kirby for a longer discussion of youth voter turnout trends in 2006.