



CIRCLE

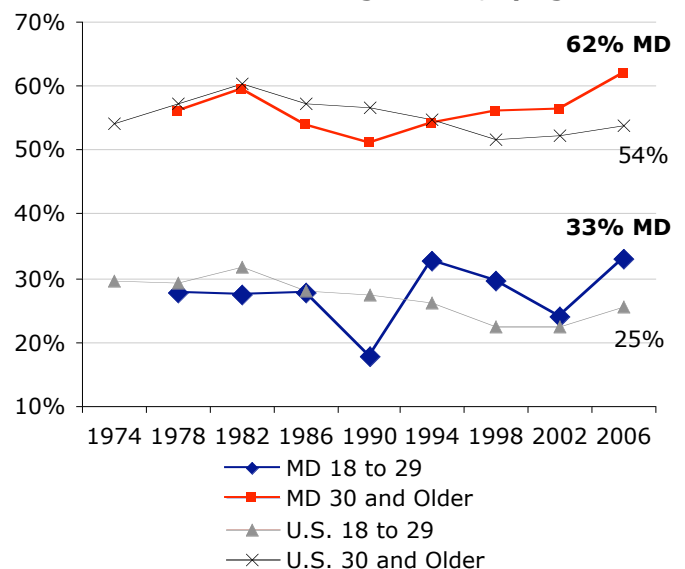
The Center for Information & Research on
Civic Learning & Engagement

Quick Facts about Young Voters in Maryland: The Midterm Election Year 2006

By Mark Hugo Lopez, Karlo Barrios Marcelo, and Jared Sagoff¹
Updated June 2007

The 2006 midterm election was the second major election in a row that saw an increase in the electoral participation of young people ages 18-29. Between 2002 and 2006, the percentage of eligible young people who voted increased by 3 percentage points to 25 percent, the single largest increase among all age groups nationally.² Similarly, while youth electoral participation improved between 2002 and 2006 nationally, in Maryland, the youth voter turnout rate rose 9 percentage points from 24 percent in 2002 to 33 percent in 2006. Overall, Maryland ranked 8th among all states and the District of Columbia in 2006, up from 18th in 2002, and was eight percentage points higher than the nation as a whole.

Graph 1: Maryland Voter Turnout in Midterm Years Among Citizens, by Age



Source: Current Population Survey, November Supplements, 1974-2006.

This fact sheet reports the characteristics of young voters for the state of Maryland, including estimates of the number of young voters, and voter turnout rates in 2006 and 2002 for various sub-groups of young people.

Youth Turnout Estimates, 2006

In 2006, a midterm election year, there were an estimated 725,000 young people in Maryland who were eligible to vote in U.S. elections. Table 1 shows voting statistics for the years 2006 and 2002.

Voter Turnout Rates in 2006 and 2002 Among Eligible Young Citizens, Ages 18-29

Table 2 displays voter turnout rates for various groups of young people ages 18 to 29 in 2006 and 2002 in Maryland. In 2006, voter turnout among many youth groups in Maryland was up from 2002. Only among young people with a BA or more was the voter turnout rate at 40 percent or more. Black non-Hispanics voted at a lower rate than in 2002 (down 7 points).

Partisanship Among Young Voters in 2006

The majority of young voters identified as Democrat, regardless of how they voted, in the 2006 elections. See Table 3.

Table 3 – Partisanship Among 18 to 29 year old Voters in 2006

	Maryland
Democrat	51 percent
Independent	***
Republican	30 percent
Something Else	***

Source: Authors' Tabulations from the National Election Pool, Exit Poll Survey, 2006. (***) – Sample size was too small to produce reliable estimates.

Table 1 – Maryland Voter Turnout Statistics, 2006 and 2002

	Young People 18 to 29	Adults 30 and Older
2006		
Number of Votes Cast	243 thousand	1.9 million
Voter Turnout Rate	33 percent	62 percent
Share of all Voters	11 percent	89 percent
2002		
Number of Votes Cast	144 thousand	1.7 million
Voter Turnout Rate	24 percent	56 percent
Share of all Voters	8 percent	92 percent

Source: Authors' Tabulations, Current Population Survey, November Supplement 2006 and 2002.

Table 2 – Maryland Voter Turnout Rates Among Young Citizens ages 18 to 29, 2006 and 2002

Voter Turnout Rate Among:	2006	2002
Race/Ethnicity³		
White non-Hispanics	37 percent	20 percent
Black non-Hispanics	28 percent	35 percent
Hispanics	***	***
Asian non-Hispanics	***	***
Native American non-Hispanics	***	***
Gender		
Women	35 percent	32 percent
Men	31 percent	15 percent
Educational Attainment		
Less than High School	***	***
High School	26 percent	14 percent
Some College	37 percent	28 percent
BA or more	48 percent	40 percent

Marital Status		
Single Men	30 percent	15 percent
Single Women	36 percent	33 percent
Married Men	***	19 percent
Married Women	29 percent	33 percent
Registered Voter	58 percent	47 percent

All Youth, Maryland	33 percent	24 percent
All Youth, National	25 percent	22 percent

Source: Authors' Tabulations from the 2006 and 2002 November Supplements of the Current Population Survey. (***) indicates a sample size is too small to produce a reliable estimate.

Notes

¹ Research Director, Research Associate, and Research Assistant, respectively. We also thank Peter Levine, Emily Kirby, Abby Kiesa, and Deborah Both for comments on previous drafts of this fact sheet.

² See “Youth Voter Turnout Increases in 2006” by Mark Hugo Lopez, Karlo Barrios Marcelo, and Emily Hoban Kirby for a longer discussion of youth voter turnout trends in 2006.

³ We have defined racial/ethnic groups in the Current Population Survey November Supplements by defining anyone with Hispanic background as Latino; individuals who cite a single non-Hispanic race or ethnicity are identified as non-Hispanic white, African American, Asian American or Native American.