



FACT SHEET

CIRCLE

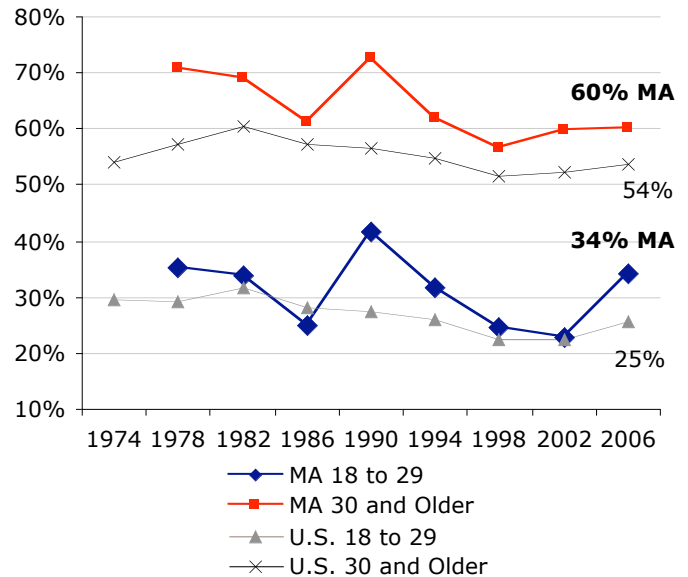
The Center for Information & Research on
Civic Learning & Engagement

Quick Facts about Young Voters in Massachusetts: The Midterm Election Year 2006

By Mark Hugo Lopez, Karlo Barrios Marcelo, and Jared Sagoff¹
Updated June 2007

The 2006 midterm election was the second major election in a row that saw an increase in the electoral participation of young people ages 18-29. Between 2002 and 2006, the percentage of eligible young people who voted increased by 3 percentage points to 25 percent, the single largest increase among all age groups nationally.² Similarly, while youth electoral participation improved between 2002 and 2006 nationally, in Massachusetts, the youth voter turnout rate rose 11 percentage points from 23 percent in 2002 to 34 percent in 2006. Overall, Massachusetts ranked 7th among all states and the District of Columbia in 2006, down from 23rd in 2002, and was nine percentage points higher than the nation as a whole.

Graph 1: Massachusetts Voter Turnout in Midterm Years Among Citizens, by Age



Source: Current Population Survey, November Supplements, 1974-2006.

This fact sheet reports the characteristics of young voters for the state of Massachusetts, including estimates of the number of young voters, and voter turnout rates in 2006 and 2002 for various sub-groups of young people.

Youth Turnout Estimates, 2006

In 2006, a midterm election year, there were an estimated 842,000 young people in Massachusetts who were eligible to vote in U.S. elections. Table 1 shows voting statistics for the years 2006 and 2002.

Voter Turnout Rates in 2006 and 2002 Among Eligible Young Citizens, Ages 18-29

Table 2 displays voter turnout rates for various groups of young people ages 18 to 29 in 2006 and 2002 in Massachusetts. In 2006, voter turnout among many youth groups in Massachusetts was up from 2002.

Table 1 – Massachusetts Voter Turnout Statistics, 2006 and 2002

	Young People 18 to 29	Adults 30 and Older
2006		
Number of Votes Cast	276 thousand	2.2 million
Voter Turnout Rate	34 percent	60 percent
Share of all Voters	11 percent	89 percent
2002		
Number of Votes Cast	194 thousand	2.0 million
Voter Turnout Rate	23 percent	60 percent
Share of all Voters	9 percent	91 percent

Source: Authors' Tabulations, Current Population Survey, November Supplement 2006 and 2002

Table 2 – Massachusetts Voter Turnout Rates Among Young Citizens ages 18 to 29, 2006 and 2002

Voter Turnout Rate Among:	2006	2002
Gender		
Women	34 percent	25 percent
Men	33 percent	20 percent
Educational Attainment		
Less than High School	***	15 percent
High School	18 percent	10 percent
Some College	38 percent	27 percent
BA or more	46 percent	32 percent
Marital Status		
Single Men	31 percent	19 percent
Single Women	37 percent	28 percent
Married Men	***	25 percent
Married Women	***	13 percent
Registered Voter	62 percent	50 percent
All Youth, Massachusetts	34 percent	23 percent
All Youth, National	25 percent	22 percent

Source: Authors' Tabulations from the 2006 and 2002, November Supplements of the Current Population Survey. '***' indicates a sample size is too small to produce a reliable estimate.

Notes

¹ Research Director, Research Associate, and Research Assistant, respectively. We also thank Peter Levine, Emily Kirby, Abby Kiesa, and Deborah Both for comments on previous drafts of this fact sheet.

² See "Youth Voter Turnout Increases in 2006" by Mark Hugo Lopez, Karlo Barrios Marcelo, and Emily Hoban Kirby for a longer discussion of youth voter turnout trends in 2006.